

# LESSON 2

# GIVE DIRECTIONS IN A BUILDING



**YUSEF SAYED**

@YusefS

This hotel is so big!  
I can't find anything.



## 1 VOCABULARY Places in a hotel

**A** 08-08 Listen. Then listen and repeat.



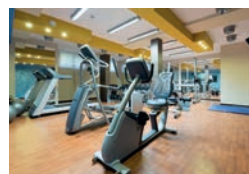
a parking lot



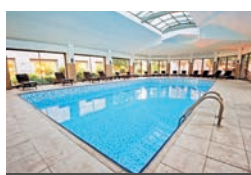
a café



a restroom



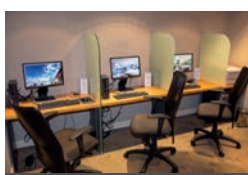
a fitness center



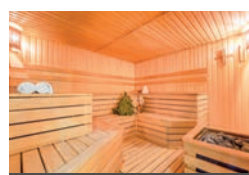
a pool



a gift shop



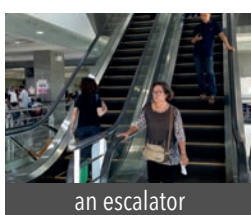
a business center



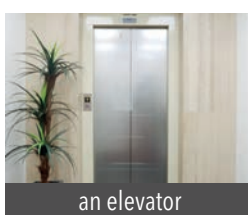
a sauna



a lobby



an escalator

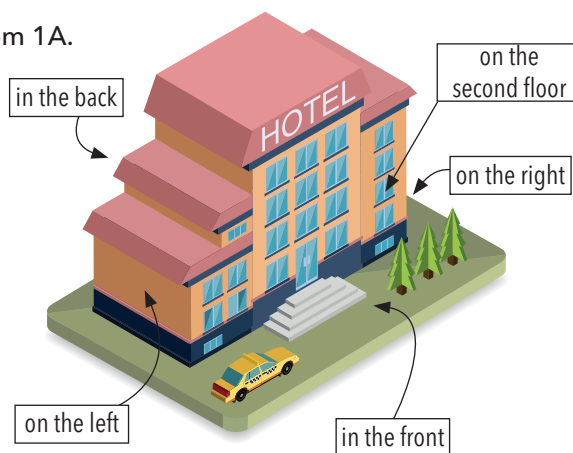


an elevator

**B** Write the place next to the activity. Use words from 1A.

- eat lunch a café
- go swimming \_\_\_\_\_
- buy a T-shirt \_\_\_\_\_
- leave your car \_\_\_\_\_
- use the internet \_\_\_\_\_
- exercise \_\_\_\_\_
- go up to your room \_\_\_\_\_ / \_\_\_\_\_

**C PAIRS** Compare your answers.



## 2 GRAMMAR Like, want, need + infinitives

Affirmative statements		
Subject	Verb	Infinitive
I	like	to travel.
You	want	
We	need	
They		
He	likes	
She	wants needs	

Negative statements			
Subject	Do not	Verb	Infinitive
I		like	to travel.
You	do not	want	
We		need	
They			
He	does not	like	
She		want need	

### Notes

- Infinitive = to + base form of the verb.
- Use contractions in speaking and informal writing.



>> FOR PRACTICE, GO TO PAGE 122



### 3 PRONUNCIATION

**A** ▶08-10 Listen. Notice the main stress. Then listen and repeat.  
Where's the **fitness** center? Take the **elevator**. It's on the **left**.

**B** ▶08-11 Listen. Underline the word that has the main stress.  
Then listen and repeat.

1. A: How can I help you?  
B: Where's the sauna?  
A: It's next to the pool.
2. A: Where's the gift shop?  
B: It's right over there.  
A: Right, I see it.

**C** **PAIRS** Practice the conversations in 3B.

#### Main stress

We stress the important words in a sentence. One word has the main (strongest) stress. The main stress is often on the last important word.

### 4 CONVERSATION



**A** ▶08-12 Listen or watch. Circle the correct answer.

1. Yusef thanks the clerk for his *help* / *time* / *call*.
2. Yusef wants to *eat* / *sleep* / *watch TV*.
3. The business center is next to the *pool* / *café* / *gift shop*.
4. The elevators are *on the right* / *on the left* / *in front of* Yusef.



**B** ▶08-13 Read the Conversation Skill. Listen or watch. Complete the conversation.



Yusef: Where is the **café**?

Clerk: It's \_\_\_\_\_.

Yusef: I see. Do you have a **fitness center**?  
I \_\_\_\_\_ before dinner, tonight.

Clerk: Yes, we do. It's on the top floor.

Yusef: Thanks. And I \_\_\_\_\_ something.  
Where's the business center?

Clerk: It's over there, **on the right**.

#### CONVERSATION SKILL

##### Show understanding

To show that you understand what someone is saying, say:

- *I see.*
- *Uh-huh.*
- *Right.*

Listen or watch the conversation in 4A. Raise your hand when the speaker shows understanding.

**C** ▶08-14 Listen and repeat. Then practice with a partner.

**D** **PAIRS** Make a new conversation. Use these words or your own ideas.

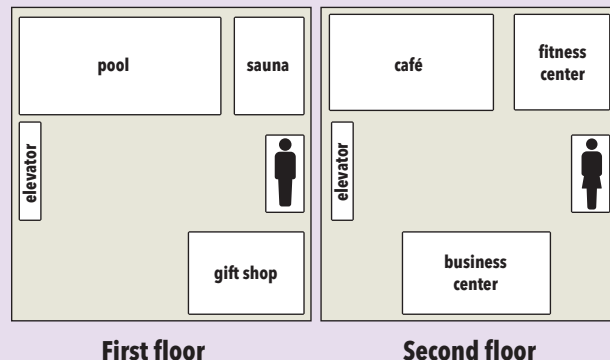
gift shop  
pool  
on the left

### 5 TRY IT YOURSELF

**ROLE PLAY** Look at the floor plans. Ask for and give directions.

**A:** Excuse me. Is there a business center here? I want to use a computer.

**B:** Yes, there is. Take the elevator to the second floor. The business center is on the right.



First floor

Second floor

